

ebm-papst A&NZ Pty Ltd  
Victoria

10 Oxford Road  
Laverton North VIC, 3026  
Phone (03) 9360 6400  
sales@ebmpapst.com.au

New South Wales

Unit 13, 19 Aero Road  
Ingleburn NSW, 2565  
Phone (02) 9827 6400  
sales@ebmpapst.com.au

New Zealand

Unit H, 61 Hugo Johnston Dr.  
Penrose Auckland, 1061  
Phone +64 (9) 525 0245  
sales@ebmpapst.com.au

**ebmpapst**

the engineer's choice

# EC plug fans *in stock.*

For applications including ventilation, air handling units, air conditioners, fan coils and fan arrays.

**ebmpapst**

the engineer's choice

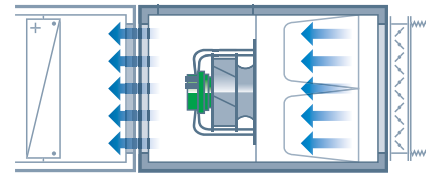
## ebm-papst high performance centrifugal fan modules

ebm-papst backward curved centrifugal EC RadiPac and RadiCal fans are highly efficient, quiet in operation and fully controllable by MODBUS/BACnet. Energy savings of over 35% are now available without the need for a VSD. We aim to carry stock of EC plug fans and are able to offer short lead times.

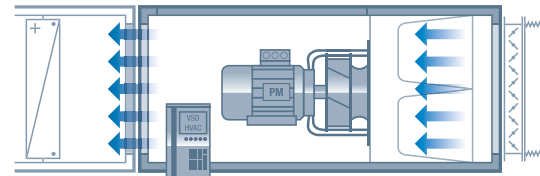
### Benefits at a glance

- Maximum performance
- Up to 30% energy savings
- Extremely quiet operation
- Integrated drive electronics for easy speed control
- Easy installation
- Fits multiple applications
- Communication & control via RS485/MODBUS or 0-10V/4-20mA
- Easy integration into BMS automation level
- BACnet to MODBUS gateway and other controls options available – contact us for details

GreenTech EC fans

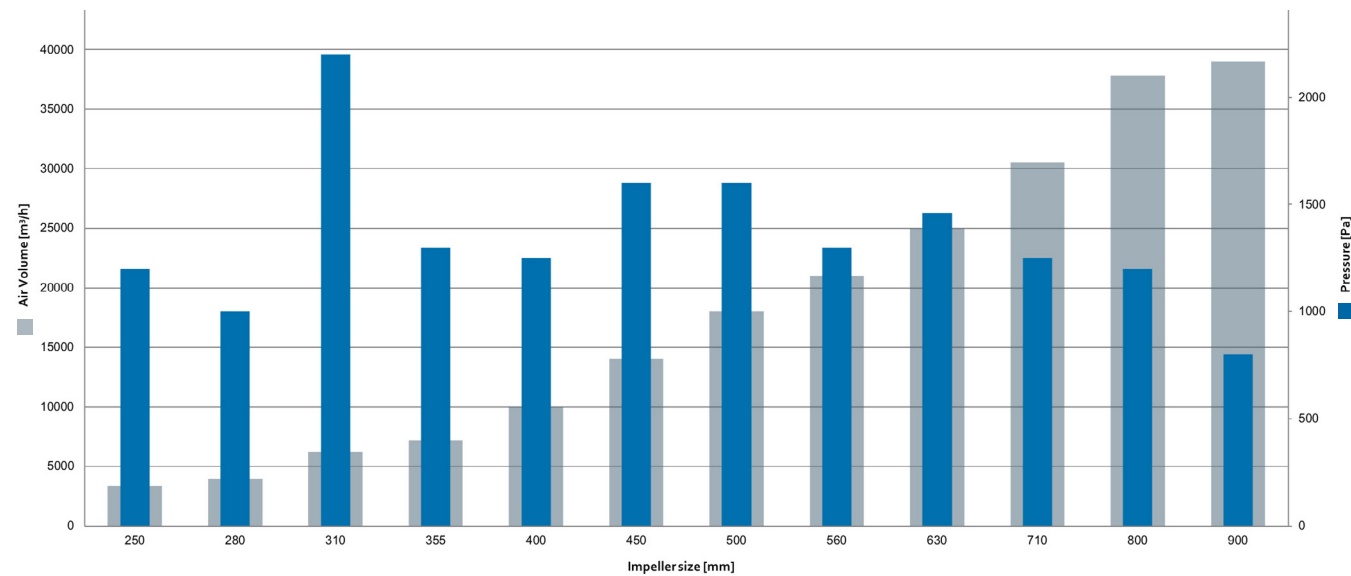


Conventional fans



PM with frequency converter

## Sizes available (Full performance data in our selector program)



# EC plug fans and blowers *in stock.*

**ebmpapst**

the engineer's choice

Nominal Data	Assembly type	Description	Fan Size	Voltage	Phase	Corrosion protection	Power Input	Maximum current*1	Min. ambient temperature	Max. ambient temperature	Wiring diagram	Controls*2	Approx. weight	Lead or Junction Box	Motor Type	FlowGrid Part No.	Conduit and cable glands	Suitable for Anti-Vibration Mount	N level
Part No.			mm	V	-		W	A	°C	°C			kg	mm or (JB)					
K3G190RD4509	P	RadiCal	190	230V	1~	Standard	169	1.35	-25	60	RC3	0-10V	2.0	2110	EC	00190-2-2957	-	No	74.9
K3G220RD5303	P	RadiCal	220	230V	1~	Standard	168	1.4	-25	50	RC3	0-10V	2.1	450	EC	00250-2-2957	-	No	75.4
K3G225RE0703	P	RadiCal	225	230V	1~	Standard	170	1.4	-25	60	RC3	0-10V	2.5	450	EC	00250-2-2957	-	No	77.9
K3G250RE0710	P	RadiCal	250	230V	1~	Standard	170	1.4	-25	60	RC3	0-10V	2.8	1370	EC	00250-2-2957	-	No	76
K3G250PR04H2	S	RadiPac II	250	230V	1~	Standard	500	2.3	-25	45	RP3	0-10V & MODBUS	8.5	1000	EC	20280-2-2957	-	No	81.3
K3G250PR17I9	S	RadiPac II	250	230V	1~	Standard	750	3.3	-40	45	RP3	0-10V & MODBUS	9.3	3000	EC	20280-2-2957	-	No	79.1
K3G280PR04I2	S	RadiPac II	280	230V	1~	Standard	750	3.3	-25	45	RP3	0-10V & MODBUS	9.1	1000	EC	20280-2-2957	-	No	79.6
K3G310PH5832	S	RadiPac II	310	400V	3~	CDP	2950	4.6	-25	40	RP1	0-10V & MODBUS	18.0	JB	EC	25310-2-2957	CFK001	No	71.7
K3G355PH4932	S	RadiPac II	355	400V	3~	CDP	1900	3.0	-25	55	RP1	0-10V & MODBUS	25.0	JB	EC	00400-2-2957	CFK001	No	76.4
K3G400PI9202	S	RadiPac II	400	400V	3~	Standard	2500	3.8	-25	40	RP1	0-10V & MODBUS	26.0	JB	EC	35505-2-2957	CFK001	No	75.5
K3G450PA3103	S	RadiPac II	450	400V	3~	Standard	4450	6.8	-40	40	RP6	0-10V & MODBUS	37.0	JB	EC	35505-2-2957	-	No	73
K3G450PA3133	S	RadiPac II	450	400V	3~	CDP	4450	6.8	-40	40	RP6	0-10V & MODBUS	37.0	JB	EC	35505-2-2957	-	No	73
K3G500RA2803	S	RadiCal	500	400V	3~	Standard	3600	5.5	-40	40	RP6	0-10V & MODBUS	35.0	JB	EC	35505-2-2957	-	No	69
K3G500PB2403	S	RadiPac II	500	400V	3~	Standard	3900	6	-40	45	RP6	0-10V & MODBUS	42.2	JB	EC	35505-2-2957	-	No	74.7
K3G500PB3331	S	RadiPac II	500	400V	3~	CDP	5700	9.0	-25	40	RP1	0-10V & MODBUS	49.8	JB	EC	35505-2-2957	CFK002	No	71.7
K3G560RA2403	S	RadiCal	560	400V	3~	Standard	3500	5.4	-40	40	RP6	0-10V & MODBUS	42.0	JB	EC	00630-2-2957	-	No	70.4
K3G560PB3103	S	RadiPac II	560	400V	3~	Standard	4250	6.5	-40	40	RP6	0-10V & MODBUS	51.8	JB	EC	00630-2-2957	-	No	74.1
K3G560PC0431	S	RadiPac II	560	400V	3~	CDP	5000	7.7	-25	40	RP1	0-10V & MODBUS	64.3	JB	EC	00630-2-2957	CFK002	No	73.3
K3G630PV0401	C	RadiPac II	630	400V	3~	Standard	7060	10.8	-40	40	RP1	0-10V & MODBUS	89.1	JB	EC	00630-2-2957	CFK002	Yes	70.1
K3G710PV0501	C	RadiPac II	710	400V	3~	Standard	7050	10.7	-40	40	RP1	0-10V & MODBUS	120.6	JB	EC	50710-2-2957	CFK002	Yes	71.3
K3G800PV1301	C	RadiPac II	800	400V	3~	Standard	7950	12.1	-40	40	RP1	0-10V & MODBUS	138.2	JB	EC	63000-2-2957	CFK002	Yes	71.9
K3G900AR1001	C	RadiPac	900	400V	3~	Standard	7300	11.2	-25	40	RP1	0-10V & MODBUS	222.0	JB	EC	-	CFK002	Yes	68.0
7/7 Tight	B	D3G160HA0402	160	230V	1~	Standard	750	3.3	-25	60		0-10V & MODBUS	7.8	JB	EC	-	-	No	53.2
7/7	B	D3G200HD0202	200	230V	1~	Standard	750	3.3	-25	60		0-10V & MODBUS	11.6	JB	EC	-	-	No	60.0
9/7	B	D3G225IF1102	225	230V	1~	Standard	750	3.3	-25	40		0-10V & MODBUS	12.5	JB	EC	-	-	No	58.8
9/9	B	D3G250HH0302	250	230V	1~	Standard	750	3.3	-25	40		0-10V & MODBUS	12.2	JB	EC	-	-	No	59.1

\*1: Nominal data in operating point with maximum load

\*2: Check data sheet for detailed wiring diagram. BACnet and Universal Gateway also available.

## Corrosion protection

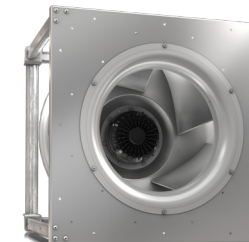
CDP (cathodic dip painting) version: Higher protection to corrosion (Swimming pool applications)

Product-specific operating instructions are available via our website [www.ebmpapst.com.au](http://www.ebmpapst.com.au) or on request.

## Assembly type



P: with plastic housing



C: Cube Design



S: Spider Mount



B: Blower