



## Reinforced planetary gear units expand gear/motor range from ebm-papst **Powerful gearboxes for powerful motors**

Saskia Tarantini  
Marketing ebm-papst St. Georgen  
Contact for editorial staff  
Phone: +49 7724 81-1342  
Fax: +49 7724 81-1459  
[Saskia.Tarantini@de.ebmpapst.com](mailto:Saskia.Tarantini@de.ebmpapst.com)  
[presse@de.ebmpapst.com](mailto:presse@de.ebmpapst.com)

2011-04-13- Page 1 of 1

"Birds of a feather flock together" – so says the proverb. In the case of the new, reinforced gearbox line Performax® Plus, this saying also holds true for the different combination options with the powerful electronically commutated drive systems (BLDC) of the model series ECI 63 and VDC-3-49.15 from ebm-papst.

The increased tothing width in first stage and the combination with gearbox housings made of hardened steel in the output stage enable the new gearboxes not only to achieve up to 100% greater continuous torque, but also to enable substantially higher impact resistance in case of overload. Reinforced bearings in the output stage furthermore provide for additional reserves in load transmission. This allows gear reductions of up to 204:1 and continuous torques of more than 60 Nm to be achieved.

In combination with the high-torque, durable drives in energy-efficient GreenTech EC technology from ebm-papst, optimally matched motor/gearbox combinations can be created for especially high service life requirements or dynamic applications with increased peak loads. With nominal output powers of up to 400 W ever more new drive solutions can be created for many different applications, e.g. in industrial automation, intralogistics or medical technology.



Fig. 1 Reinforced output stage of the planetary gearboxes

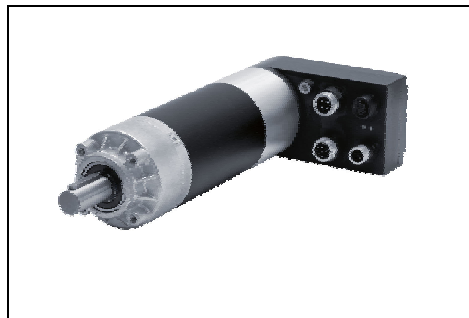


Fig. 2 ECI 63 – high-performance drive systems from a modular system

### About ebm-papst

The ebm-papst Group is the leading manufacturer of fans and motors worldwide and a pioneer and pacesetter for ultra-efficient EC technology.

In the fiscal year 2010/1 the Group achieved a turnover of 1,2 billion euros. ebm-papst employs worldwide over 11000 staff at 17 production sites (e.g. in Germany, China, USA) and 57 sales locations. Products manufactured by the global market leader can be found in many branches of industry e.g. in



### Reinforced planetary gear units expand gear/motor range from ebm-papst **Powerful gearboxes for powerful motors**

Saskia Tarantini  
Marketing ebm-papst St. Georgen  
Contact for editorial staff  
Phone: +49 7724 81-1342  
Fax: +49 7724 81-1459  
[Saskia.Tarantini@de.ebmpapst.com](mailto:Saskia.Tarantini@de.ebmpapst.com)  
[presse@de.ebmpapst.com](mailto:presse@de.ebmpapst.com)

2011-04-13- Page 2 of 2

ventilation, air conditioning and refrigeration technology, in household appliances, heating technology, IT and telecommunication applications, medical technology, applications in both passenger car and commercial vehicle technology. Not only the plant in Herbolzheim belongs to the St. Georgen site, but also 2 plants in Vecsés and Celldömök in Hungary and a plant in China. ebm-papst St. Georgen GmbH & Co. KG now has a total workforce of 3500.

Further information on [www.ebmpapst.com](http://www.ebmpapst.com) or please contact  
Saskia Tarantini – [saskia.tarantini@de.ebmpapst.com](mailto:saskia.tarantini@de.ebmpapst.com) –  
+49 7724/81-1342